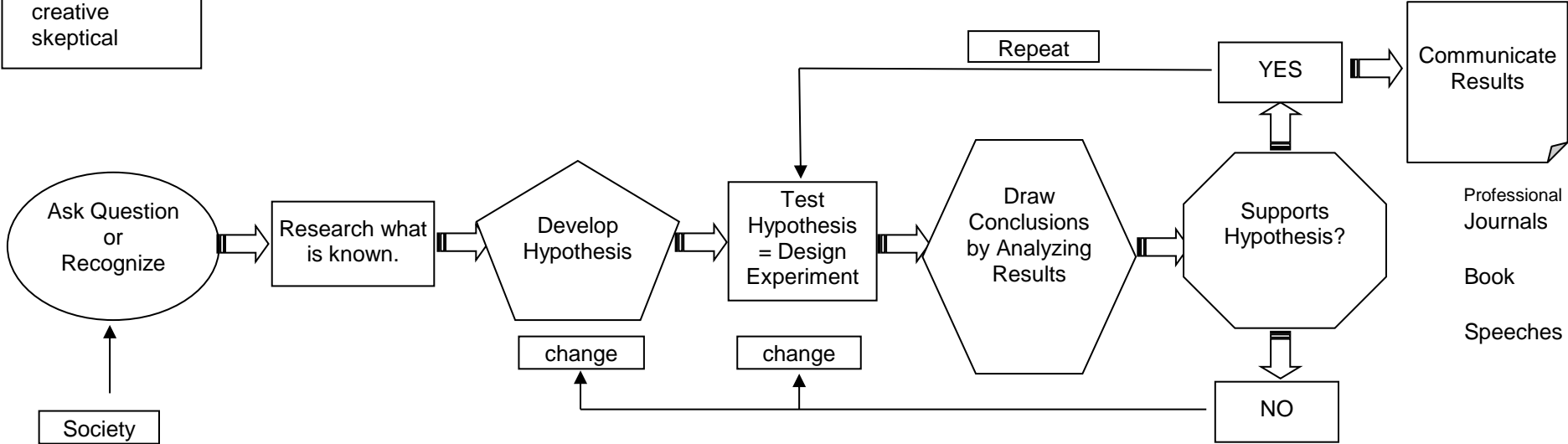


# Scientific Method

Habits of Mind:  
 curious  
 observant  
 creative  
 skeptical



Parts of an Experiment:  
 Materials List  
 Procedure  
 Variables = factors, components, elements of experiment that change.  
 -independent = what I change  
 -dependent = depends on what I change, is always what is being measured.  
 Constants = factors, components, elements of experiment that stay the same.  
 Control (group) = subject(s) that don't "experience the experiment," = don't participate.

Technology:  
 product  
 process